

1) **Boyle County** (Danville) Marker Number: 1279 "First Crop" Courthouse Lawn, US 127, Danville, KY.

2) **Clark County** (Winchester) Marker Number: 1319 "Clark County Hemp" 5 miles West of Winchester, US 60, just past Fayette County Border in Stuff Recycling Parking Lot. This is the site of the processing plant mentioned on the marker.

3) **Fayette County** (Lexington) a.) Marker Number: 1163 "Fayette County Hemp" Newtown Pike near Ironworks Rd. Near the Civil War Era Hemp Warehouse. b.) Marker Number: 1809 "John Hunt Morgan" Fayette County Courthouse Lexington, Now Lexington History Museum.

4) **Franklin County** (Frankfort) Marker Number: a.) 1164 "Franklin County Hemp" Wilkinson Blvd. In the parking lot of Jim's Seafood. This is the site of Kentucky River Mills. b.) Marker # 103 Leestown @ Entrance to Buffalo Trace Distillery Wilkinson Blvd. Frankfort.

5) **Jefferson County** (Louisville) Marker Number: 2231 "Farmington" 3033 Bardstown Rd. Louisville

6) **Jessamine County** (Nicholasville) Marker Number: 1315 "Jessamine County Hemp" Courthouse Lawn US 27 Nicholasville, KY.

7) **Madison County** (Richmond) Marker Number: 1362 "Madison Hemp and Flax Co." KY 52 at Silver Creek Bridge. 5.4 Miles W of Eastern Bypass in Richmond.

8) **Mason County** (Maysville) Marker Number: 1165 "Hemp in Mason County" US 68 Near Entrance of Maysville Community College.

9) **Scott County** (Georgetown) Marker Number 1166 "Hemp in Scott County" North Lawn of the Cardome Center US 25 North of Downtown. Marker is between the main building and US 25.

10) **Shelby County** (Shelbyville) Marker Number 1320 "Shelby County Hemp" US 60 & KY 714, 3.5 Miles East of Shelbyville.

11) **Woodford County** (Versailles) Marker 1167 "Woodford County Hemp" US 60, 1 Mile East of Versailles.

Other Sites to See and Things to Do:

Bourbon County: Bourbon County Court House Rotunda, Hopewell Museum
Boyle County: Combs Hall Centre College, Old Crow Farm and Winery, Clark's Run Creek, Hemp Highway Danville Tour Spring 2018

Clark County: Bluegrass Heritage Museum

Fayette County: Ashland Historic Mansion, Waveland State Historic Site, Hopemont (aka The Hunt Morgan Home) Gratz Park Walking Tour, Mulberry Neighborhood Walking Tour, Rock House Brewing Company, Hemp Highway Lexington Tour Spring 2018

Franklin County: Thomas D. Clark Kentucky History Center

Jefferson County: Locust Grove Estate, Goodwood Brewing Company, Rainbow Blossoms Markets

Jessamine County: E.R. Sparks Warehouse, (Hemp Highway driving tour coming Spring 2018), Camp Nelson

Madison County: White Hall

Scott County: Georgetown-Scotty County Museum, Ward Hall

Shelby County: Hempridge Road. KY 714, A O Stanley House

Woodford County: Woodford County Historical Society, Historic Midway Store, Midway Boutique

For more information about what you will find at these other sites please refer to our website.

Visit The Pioneer Merchant Store:
<http://www.kentuckyhemphighway.com/html/store.html>

The Kentucky Hemp Highway

Ryan Muse
Graphic Designer

Logo Design | Vector Illustration | Print Design | Desktop Publishing | Web Design & Development

USE DISCOUNT CODE KYHEMP17 FOR 10% OFF YOUR FIRST BILL!

www.musewebdesign.com

Full Circle Market
NATURALLY SERVING WINCHESTER SINCE 2001

Now Offering Many KY Grown Hemp Products
Hemp Hearts, Nutritional Hemp Oil, Hemp Chocolates, KY Dawgs

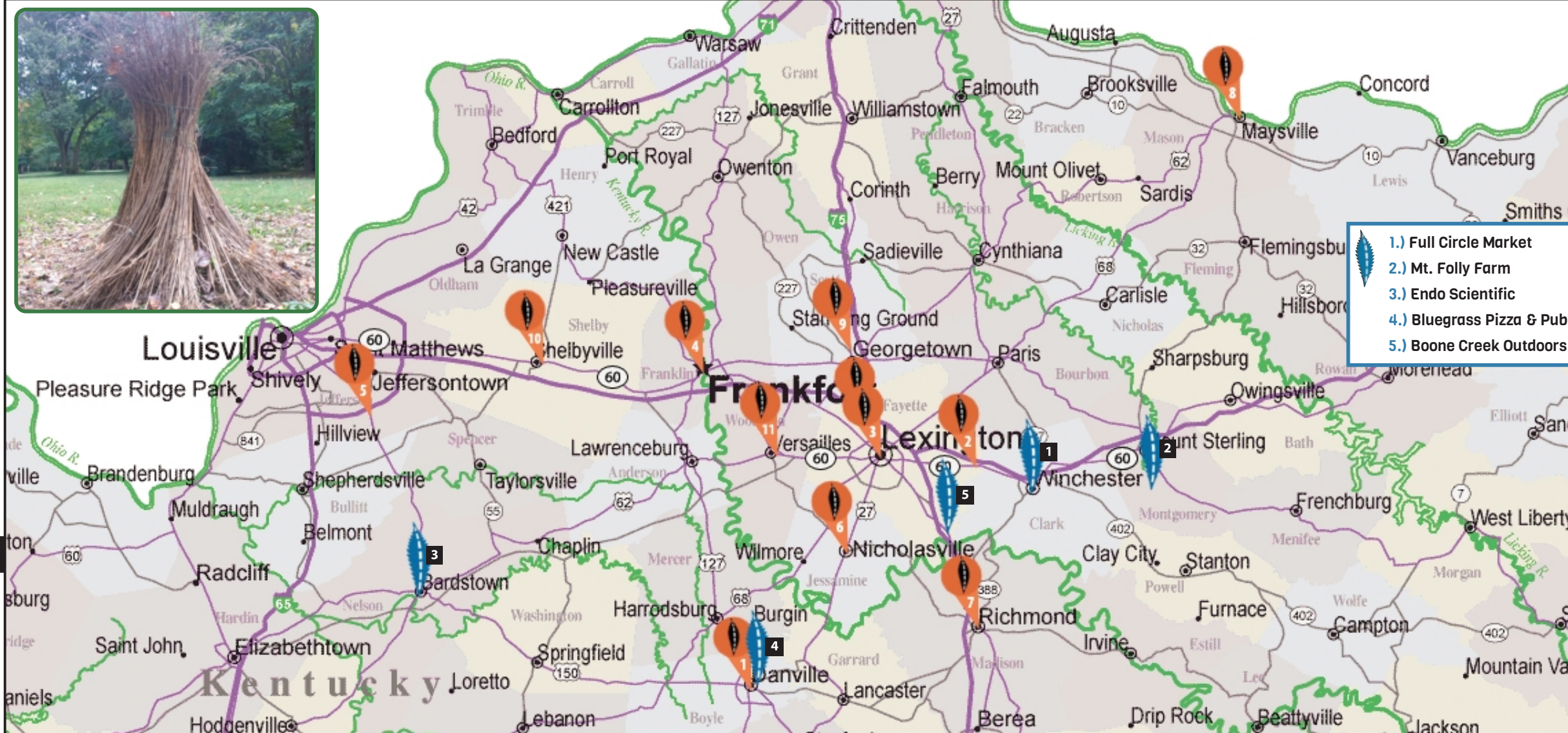
Plus: CBD Oil • Hemp T-Shirts • Essential Oils
Farm Fresh Eggs • Local Meats • Local Honey
Natural Body Care • Supplements • Bulk Goods
Award Winning Gluten-Free Beer Cheese
Healthy House Made Salads & Dressings

240 Redwing Dr. Winchester, KY
Monday-Friday 10-7 & Saturday 10-5
859.744.3008

www.fullcirclemarket.com

MT. FOLLY FARM
WINCHESTER, KY

To learn more about our hemp crop, candy and building projects, visit mtfollyfarm.com, or like us on [facebook](https://www.facebook.com/mtfollyfarm).



- 1.) Full Circle Market
- 2.) Mt. Folly Farm
- 3.) Endo Scientific
- 4.) Bluegrass Pizza & Pub
- 5.) Boone Creek Outdoors

ENDO SCIENTIFIC
A Endocannabinoid Research Company

502.373.7772
512 E. Stephen Foster Ave.
Suite 102
Bardstovn, KY 40004

BLUEGRASS Pizza & Pub
DANVILLE, KY
EST. 2010

DANVILLE'S PREMIERE PIZZA RESTAURANT!

314 W Main St, Danville, KY 40422 | (859) 236-7737
www.bluegrasspizzaandpub.com

Danville KENTUCKY

Historically Bold
DESTINATION DANVILLE

105 E. Walnut St. Danville, KY 40422
www.danvilleky.org

BOONE CREEK OUTDOORS

Lexington's world class Zip Line Canopy Tour showcasing the spectacular Boone Creek limestone gorge.

Call (855) 494-7539
For Reservations, or Visit Our Website!

<http://boonecreekoutdoors.com/>



After a day of taking in the sites treat yourself to a craft beer and artisan pizza at the Bluegrass Pizza Pub on W. Main St. Just look for the red building with the rope motif window moldings.



First Post Office, West of Appalachia in the Mountains Construction Square, Danville

The Gift Shop at Constitution Square, 134 S. Second St is where you'll find your Hemp Highway of Kentucky gear.



From the first registered hemp crop, in 1775 to the first post office west of the Appalachian Mountains, Danville is a historic Kentucky Destination. Stop by the visitor's center in historic Grayson's Tavern 105 E Walnut St. to learn all there is to do.

Hemp Highway of Kentucky



Hemp-braking mural, Bourbon Co., Courthouse, Paris

History Should Be an Adventure!



"Hemp in Kentucky", Jessamine Co. Courthouse Lawn, Nicholasville

Kentucky's Original Hemp History Tour



Endo Scientific in Bardstow, is a privately held company investing in agricultural production, extraction and processing capabilities in the Commonwealth.



Hemp is a plant rich in cannabidiol or CBD, a substance found in the resin glands or trichomes of the plant. Research into CBD has been led by private companies with more public institutions getting involved recently. It is being investigated for its beneficial results on a significant number of conditions.

Trichomes Photographed by Kristen Voder



Hemp today is more than just rope, twine and cloth. It is more than a health food high in protein or an oil that is comprised of 80% essential fatty acids with an especially high concentration of beneficial linoleic acids.

Hemp can also be used as a building material. Hempcrete is made by mixing hemp hurds with a binding agent like lime and water. The result is a lightweight, naturally anti-bacterial building materials with high insulation values. It can be used in a variety of applications, like restoring the cabin at Mt. Folly Farm.



Welcome to the Hemp Highway of Kentucky, the self-directed tour that gets you off the interstate and rolling through the lush Bluegrass countryside.

Looking for an afternoon adventure? The 2 1/2 hour canopy tour at Boone Creek outdoors provides a one of a kind perspective on one of the Lexington areas oldest industrial sites, just 20 minutes from downtown.



Or for an overnight adventure, the pioneer homestead bread and breakfast at Mt. Folly Farm in Winchester combines the frontier experience of a 1790's era log cabin with all the modern comforts.

Wherever you chose to roam along the Hemp Highway of Kentucky your journey will be one of unmatched beauty and spirit.

Disclaimer: The Hemp Highway of Kentucky is a self-guided tour of Kentucky's fertile hemp history. We do not promote or condone any activity that is illegal in the Commonwealth of Kentucky.



Hemphridge Baptist Church Est. 1913 Built 1916, Hemphridge Rd. Shelby County

There is also a list of additional attractions in each county that have a hemp tale or two to tell. Visit our website www.kentuckyhemphighway.com to learn more about these attractions and to see additional photographs we have collected along the way.

The map on the other side of this brochure shows the locations of the 13 roadside markers that make up the skeleton of the Hemp Highway of Kentucky tour. The map also features our kind sponsors, whose gracious support make this enhanced brochure possible.

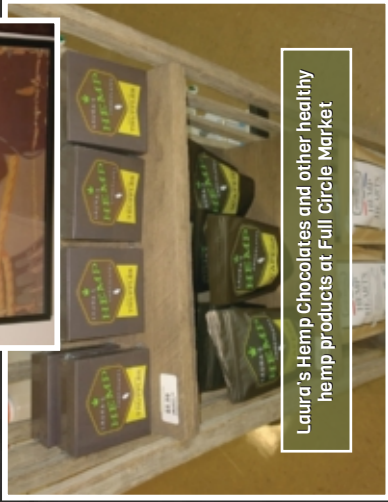


Hemp Highway of Kentucky at Boone Creek Outdoors

Winchester was the site of Kentucky's only Hemp for Victory era hemp mill. It was recently torn down, but you can still learn about it at the Bluegrass Heritage Museum 217 S. Main St.



Photo to Right: Original Hemp for Victory Sign Bluegrass Heritage Museum



Laura's Hemp Chocolates and other healthy hemp products at Full Circle Market

On your way into town please visit the Full Circle Market to stock up on a variety of wholesome organic snacks and other products. While there ask for a taste of their homemade beer cheese a healthier twist on a local delicacy. You can also get your Hemp Highway gear like T-Shirts and magnets.



Hemp Highway Car or Fridge Magnets

Winchester makes for a great stop or day trip while enjoying your adventure at Mt. Folly Farms!